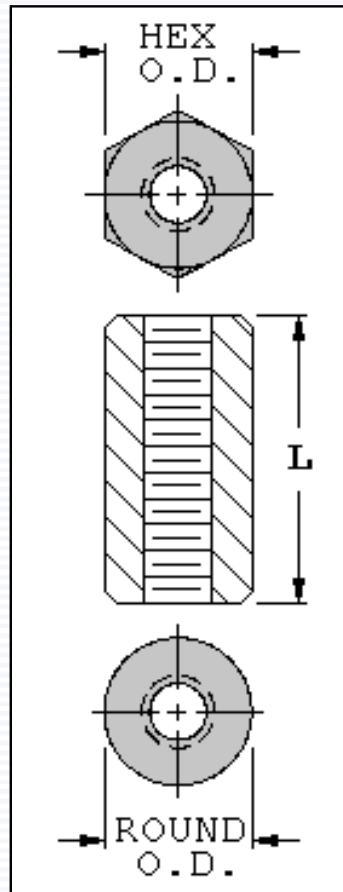


# Insulated Threaded Standoffs

6-32 Thread - .250 [6,35] O.D. - Nylon • Phenolic



6-32 Threaded Standoffs - .250 [6,35] O.D.

Length "L"	Outside Diameter O.D.	Hex Nylon 6/6, UL94V-2	Hex Nylon 6/6, UL94V-0	Round Phenolic PBE, Neutral
		Cat. No.	Cat. No.	Cat. No.
.250 [6,35]	.250 [6,35]	<b>1903A</b>	<b>8441A</b>	<b>383</b>
.375 [9,53]	.250 [6,35]	<b>1903B</b>	<b>8441B</b>	<b>384</b>
.500 [12,70]	.250 [6,35]	<b>1903C</b>	<b>8441C</b>	<b>385</b>
.625 [15,87]	.250 [6,35]	<b>1903F</b>	<b>8441D</b>	—
.750 [19,05]	.250 [6,35]	<b>1903D</b>	<b>8441E</b>	<b>386</b>
.875 [22,23]	.250 [6,35]	<b>1903G</b>	<b>8441F</b>	—
1.000 [25,40]	.250 [6,35]	<b>1903E</b>	<b>8441G</b>	<b>387</b>
1.250 [31,75]	.250 [6,35]	—	—	—
1.500 [38,10]	.250 [6,35]	—	—	<b>388</b>
1.750 [44,45]	.250 [6,35]	—	—	—
2.000 [50,80]	.250 [6,35]	—	—	<b>389</b>
2.250 [57,15]	.250 [6,35]	—	—	—
2.500 [63,50]	.250 [6,35]	—	—	—

Phenolic Standoffs, 1.500 [38,10] and 2.000 [50,80] are tapped .375 [9,52] each end.

Standoff sizes not shown are available on special order.

[Click to Request Samples](#)

[VIEW PRODUCT OVERVIEW](#)

